



Home Based Break Service

Providing support and short breaks to disabled children, young people, and their families

www.wakefield.gov.uk

wakefieldcouncil
working for you



Home Based Break Service

For further information about this service, please contact:

The Home Based Break Service

Tel: 01924 302291

Fax: 01924 302115

Email: homebased@wakefield.gov.uk

To request an assessment for services, please contact:

Social Care Direct

Tel: 0845 8503 503 Fax: 01924 303455

Minicom: 01924 303450, Type Talk calls welcome

Email: social_care_direct@wakefield.gov.uk

Web: www.wakefield.gov.uk



What is the Home Based Break Service?

The Home Based Breaks Service offers support to disabled children and young people, and their families. It provides short breaks which take place either in a child's own home, or in their local community. It provides an alternative to the more traditional short breaks in residential homes.

The breaks are tailored to the needs of each child or young person. Therefore, they are equally suitable for very young, vulnerable children based in their own home, or for teenagers who want to take part in activities such as sport, youth clubs, etc.

The key aims and objectives of the service are:

- to offer short breaks for disabled children/young people in their own communities, providing them with positive experiences and the opportunity to be involved in mainstream activities

- to provide stimulating and enjoyable experiences suitable for the needs of individual children and young people, enabling them to develop skills and interests through taking part in activities
- to promote confidence and independence, and provide opportunities for children to make choices
- to give carers 'time' for themselves
- to enable carers to spend time with other family members/siblings
- to support families to do things together

Who can access the Home Based Break Service?

Children and young people between 0-18 years old, living in the Wakefield district with a significant disability. The disability can be learning, physical or sensory. The service is not available to those who have only emotional or behavioural difficulties.

The views of every child and their parents/carers are taken into account when breaks are planned and agreed. Children and young people come from a variety of backgrounds and cultures, each with individual abilities and needs. The service responds to these needs by offering:

- a Family Link Service
- a Leisure Link Service
- a dedicated Sitting Service
- a Connect Placement within family homes

Who will provide the support for my child?

A team of dedicated, qualified and experienced staff support families, children and young people at home or to safely participate in the activities they choose. We sometimes use Millennium Care and Huddersfield Crossroads (independent care providers) to provide support for young people. All activities are risk assessed and evaluated to ensure they are suitable for the children and young people who are participating.

How much do the services cost?

Costs of support workers and transport are currently free for all families. We ask that families pay for any activities during the session, such as the cost of entry to an attraction or your child's refreshments.



What is Family Link?

Family Link is a service that provides safe care and support in a child/young person's own home or out in the community. This may be alongside or independent of parents/carers. Family Link is a service for children aged 0-18.

What type of things do Family Link members do?

Families will decide the most appropriate use of the support. This may include the workers:

- providing care at the child/young person's home, or taking them out into the community to enjoy leisure interests. This enables parents to have a break or spend time with siblings.
- working alongside parents to support the whole family to enjoy time together at home or in the community
- assisting with personal care or specialist health tasks, or behavioural support. A support plan will be made and this is reviewed on a regular basis.

How often do families receive support from Family Link?

The number and length of short breaks are offered depending on an assessment of need, completed by a social worker, community nurse, WeSail worker or school.

What is Leisure Link?

Leisure Link provides disabled children (aged 8 - 18 years) short breaks 'out and about' in the community. These breaks help them pursue leisure interests, have fun, gain confidence, learn new skills and develop independence.

What type of things do Leisure Link members do?

The children and young people along with their families decide what kinds of activities they take part in. For example, this could include swimming, bowling, cinema trips, visiting places of local interest, joining a young people's club or sports group, or just meeting up with friends.

How often will Leisure Link members go out?

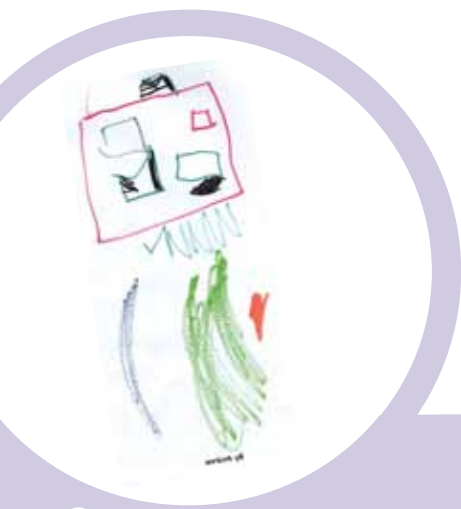
Members usually have a four hour session every fortnight. However, there will be opportunities for members to join in extra school holiday activities and other special projects if they choose.

Members of Leisure Link are welcome to join one of two children and young people's participation groups, The Really Important Group or The Holiday Club. These groups meet often during the year, and give members the opportunity to be involved in applying for funding, planning future events, and evaluating past activities.

How do I apply for Family Link or Leisure Link?

Any family caring for a disabled child can contact Social Care Direct on 0845 8 503503 and request an assessment for short break provision.

A social worker will visit you at home and complete an **assessment of need**. This assessment will then go to the Short Break Panel to be discussed, and the most appropriate short break will be identified. A manager from the Home Based Break Service will then visit the family at home to discuss details of the support, write a care plan and risk assessments, and introduce the support worker.



What is the Sitting Service?

The Sitting Service provides sitting sessions for disabled children and young people (aged 0-18 years), so that parents and carers are able to access their own leisure and social activities or have a rest.

When can I use the Sitting Service?

The sitting service is parent-led scheme. Each family is allocated 24 hours support per child over a 12 month period.

Each session lasts for a minimum of 3 hours to a maximum of 6 hours between 9am-11pm (excluding public holidays) and is subject to availability. Within these limits, parents may request when and how the support will be used.

Who can apply for the Sitting Service?

This service is open to any family caring for a disabled child or young person who is in receipt of medium or higher rate Disability Living Allowance (DLA).

It is equally open to families who have no wish or need for ongoing social service support as well as families who already receive services.

How do I apply for the Sitting Service?

You can request an application form from the Home Based Break Service. The service will arrange for a staff member to visit you at home to complete a care plan and risk assessments. A sitter will be identified and introduced to you and your child.

Please note:

- Every family receives the same allocation of hours for the year. If you join the scheme mid year you will receive an allocation for the remaining months
- Staff will not take children out to pursue activities with the Sitting Service as the service is generally provided in the home. However, if you wish your child to access activities within walking distance of your home, this can be arranged with the support worker if you are willing to meet any costs.



Who are the Connect Carers?

Carers who provide short breaks are subject to a thorough assessment and recruitment process. Children are matched to carers by a consideration of their needs. The skill, location, family composition and physical accessibility of carers' homes are also taken into account.

All carers have Criminal Records Bureau checks. We also check that there is no other reason why they should not be carers, through references, an assessment of their background, and approach to caring for young people.

What is a Connect Placement?

A Connect Placement is a short break service for children with a significant disability (aged 0-18). The placement takes place within carers' own homes, with both day and overnight care available.

Children are placed with one carer, who they visit regularly. This allows consistency and enables the carer to get to know the child and their family.





- **Day Carers** provide short periods of care, normally 4-6 hours during the day within school holidays and at weekends. They are registered childminders, with a 'good' rated Ofsted report. They have experience caring for children from all backgrounds, will have demonstrated their skills, and provided evidence of their ongoing training.
- **Overnight Carers** provide overnight stays in their own home to children. This care is offered to families who are in need of some short term assistance, or on a long term basis as part of a package of support.

Overnight Carers are assessed in the same way as foster carers, but undertake a very specific role. They must also demonstrate their skills and abilities, and will undertake regular training. If your child has specific health or communication needs, additional training will be offered to carers to make sure they can meet those needs.



How do I apply for a Connect Placement?

Any family caring for a disabled child can contact Social Care Direct on 0845 8 503503 and request an assessment.

A social worker will visit you at home and complete an **assessment of need**. This assessment will then come to the Short Break Panel to be discussed and the most appropriate short break will be identified.

Your child will be matched to a suitable carer and regular breaks planned. Parents are consulted at each step of the process. There may be a waiting list for services or for a carer to meet your child's specific needs. The length of placements depends on the individual's assessed level of need.

How do I get in touch?

If you want more information about any aspect of the Home Based Break Service, please contact:

The Home Based Break Service

Tel: 01924 302291

Fax: 01924 302115

Email: homebased@wakefield.gov.uk

Translations of this leaflet are available in Polish, Farsi, Kurdish, Urdu, French and Tigrinya. If you need this booklet interpreted into another language, please complete and return the form below. *Tick box for language required.*

Polish

Jeśli potrzebujesz polskiego tłumaczenia tej broszury, wypełnij i odeślij poniższy formularz.

Farsi

اگر این اطلاعات را به زبانی دیگر و یا در فرمتی دیگر میخواهید لطفاً از ما درخواست کنید

Kurdish

ئەگەر دەتەوێت ئەم نامپلکەییە بۆ کوردی تەرجومەبکەیت، ئەوا تکایە ئەم فۆرمەیی خوارم وە پرێکسەر موه و بێننێر موه.

French

S'il faut vous traduire ce livret en français, veuillez remplir le formulaire cidessous et nous le renvoyer.

Urdu

اگر آپ کو اس کتابچے کا ترجمہ اردو زبان میں چاہیے تو مہربانی کر کے نیچے دئے گئے فارم کو پُر کر کے بھیج دیں

Tigrinya

እዛ መጽሐፍ ብትግርኛ ክትትርጎሙልኩም እንተደልኹም፣ ነዛ ኣብ ታላቲ ዘላ ፎርም መልእኩም ምልሱዎ።

Please indicate if you would like a copy of this **Home Based Break Service** leaflet in another language (not listed above) or any of the following formats and send to the freepost address below:

- Large print On audio tape In Braille
 Another language, Please state:

Name

Address

.....
.....

Please return this form to:
FREEPOST WF 458
Communication & Information Team
Room 217, County Hall, Bond Street, Wakefield WF1 2QL

